

Introducing a Friend for Life . . . the

PORTAFOLD

REGD.

4 - 5 berth Folding Caravan



©www.portafold.co.uk

SOLE MANUFACTURERS AND DISTRIBUTORS:

PLASTICS

(FAREHAM) LTD.

BROADCUT, WALLINGTON, FAREHAM HANTS. Telephone: Fareham 4234

Your mobile Holiday Home

Erected in ONE MINUTE by only ONE PERSON!



This is the Trailer folded . . .



... and erected one minute later

**LIGHT - approx 7 cwt. - ROBUST, COMPACT,
SMART, PRACTICAL, NO BODY TO RUST,
NO WOOD TO ROT, AMPLE STORAGE**

The PORTAFOLD is a real folding caravan constructed throughout of fire-resisting fibreglass, mounted on a steel chassis. It is designed on modern flowing lines—pleasing to look at either erected as a caravan or folded as a trailer.

The use of fibreglass for its main construction ensures strength with lightness in weight, minimum maintenance and complete resistance to rot, rust, worm, and other common forms of decay—in brief, a PORTAFOLD can be your friend for life.

Internally, the PORTAFOLD gives 6' 2" headroom and over 40 cubic feet of stowage, all of which remains undisturbed when either erecting or folding. All mattresses and cushions are covered with hard-wearing moquette with matching curtains throughout.

The PORTAFOLD takes the fatigue and worry out of towing and ensures speed (tested at over 80 m.p.h.) with safety. Its unobstructed rear vision has great advantages on Motorways and winding mountain roads alike.

On continental and other overseas trips the PORTAFOLD shows a considerable saving in freight charges. On present rates £11 can be saved on the return trip to France.

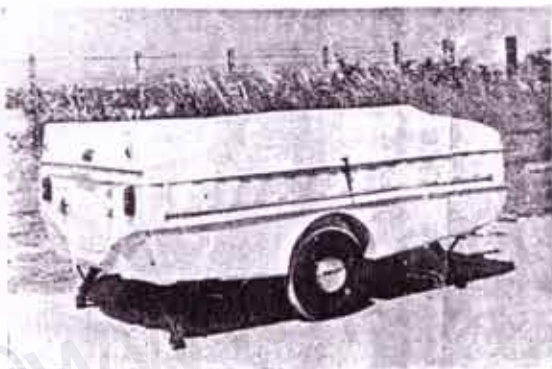
... and folded down again in
ONE MINUTE
when you are ready for the road

enjoy all the advantages of
unobstructed rear vision when towing



now turn over and see how easy it is to erect the **PORTAFOLD**

©www.portafold.co.uk



HERE IS THE TRAILER



LIFT REAR END OF ROOF WITH LEFT
AND PULL OUT REAR WALL WITH RIGHT

Erecting the
PORTAFOLD
is just as simple
as it looks!



LIFT FRONT END OF ROOF WITH LEFT HAND AND PULL OUT
FRONT WALL WITH RIGHT SNAP SMARTLY TOGETHER AT TOP



WHICH FITS SNUGLY INTO POSITION.



PULL OUT NEARSIDE WALL



...ND OF ROOF WITH LEFT HAND
...UT REAR WALL WITH RIGHT



SNAP SMARTLY TOGETHER AT THE TOP



...L OUT
...T TOP



PULL OUT OFFSIDE WALL

**ALL STOWAGE IS
COMPLETELY
PROTECTED
FROM WEATHER**
while erecting or folding
(folding follows the same pro-
cedure in reverse)

©www.portafold.co.uk



...L OUT NEAR SIDE WALL



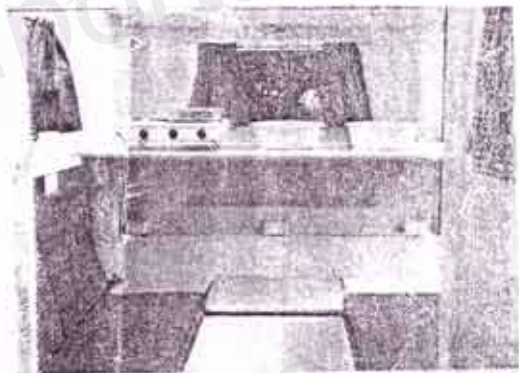
ALL READY TO MOVE IN ... TIME TAKEN—55 SECONDS!

AND NOW SEE

The following photographs illustrate

Cooking and Washing

Ample space for both at the front of the Portafold. Two washbowls included. A range of cookers available as optional extra.



First illustration shows dining table top stowed at lower centre until required.

Three backrest cushions from the seat nearest the camera have been removed for photographic purposes.



Sleeping

This can often produce excitement, complication and problems!
Basically the Portafold sleeps

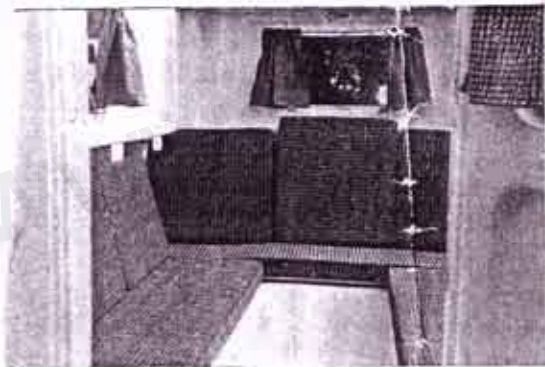
either **FOUR ADULTS IN SINGLE BERTHS**

or **THREE ADULTS (ONE DOUBLE AND ONE SINGLE) AND TWO CHILDREN (SINGLES).**

Other arrangements are possible depending on individual requirements. An additional upper berth could be used if required.

VERSATILE THE PORTA

exciting interior arrangements that are possible. Many other layouts will come to mind depending



Just Relaxing

Plenty of room. These two illustrations are taken from the same position as the previous two. The cooker and washbowl have been stowed away in the spacious locker at the front. The large table top is now positioned across the front to form a back-rest behind the three cushions and one mattress which are available as optional extras.

Three back-rest cushions from the seat nearest the camera have been omitted for photographic purposes.



This illustration shows the basic arrangement for four adult singles—three lower and one upper.

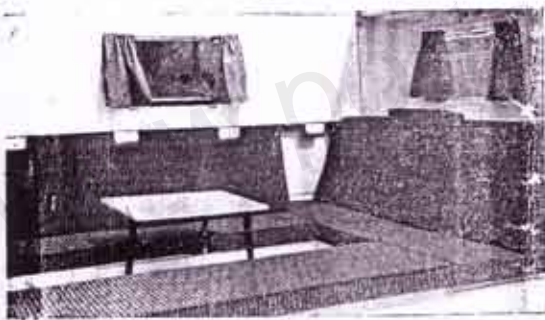
The upper berth also serves the purpose of a table for cooking and washing as shown in the first two photographs, and as a back-rest as illustrated in the second two photographs.



upright strut seen in the foreground supporting the upper berth is not required but was used solely to make these ph

PORTAFOLD IS INSIDE

to mind depending on individual requirements.



Tea Time

The heat-resisting table top has been fitted with its three screw-on legs and positioned . . .

. . . and the crowd has moved in—
with room for more !!



This shows the basic arrangement for sleeping—

Three Adults

(1 double & 1 single)

Two Children (singles)

To arrange this the small dining table top is placed across the front end of the entire gangway.

One extra, cushion 2' x 2' is required.

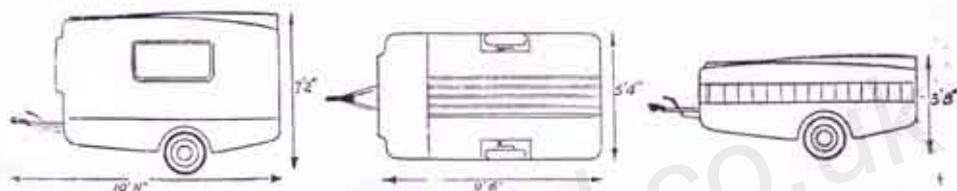


ely to make these photographs possible. Both ends of the upper berth normally rest on the side walls.

GENERAL INFORMATION

General Dimensions.	FOLDED	EXTENDED	
LENGTH	8' 8"	9' 6"	Overall including tow bar 10' 11"
WIDTH	5' 4"	6' 6"	Interior headroom 6' 2"
HEIGHT	3' 8"	7' 2"	
GROUND CLEARANCE 10". BASE OF 50-MM. TOWBALL 16" FROM GROUND LEVEL.			
BUNK LENGTHS: Top 5' 8". Lower 6' 3". Nose weight unladen approx. 50-lbs.			
UNLADEN WEIGHT: 7-cwt. approx.			
TOTAL WEIGHT, WHEN LOADED FOR TRAVELLING SHOULD NOT EXCEED 12-cwt.			

The manufacturers reserve the right to change this specification without notice.



Construction—Chassis and Undergear. Resin bonded fibreglass mounted and bolted on a separate steel chassis. The steel chassis is continued and the towing equipment attached thereto includes a 50 mm. coupling with automatic lock, self-operating over-run brakes with ratchet type parking lever. The chassis is fitted with independent 'Flexitor' suspension units and shock absorbers, 520 x 10 tyres - 7" x 1" brakes and chrome hub caps. Four screw-type jacks are bolted at each corner of the base.

Base Floors and Lockers. The base is in two sections which when bonded together form the spacious storage lockers and three lower berths. This is watertight and fitted with seven timber lids for easy access and provides over 30 cubic feet of storage capacity.

Walls and Floors. Modern styled ends in moulded fibreglass are secured to the base by brass hinges. The rear wall is shaped and recessed to provide clothes hanging space each side with clothes hooks. The door is in two sections to allow it to be opened when the van is in the towing position. A large fixed window is fitted in the upper section door and both sections are fitted with handles and locks. The opposite, or forward, end is fitted with a large opening window. The two sides are of panelled moulded fibreglass, reinforced, which automatically extend at their base as the PORTAFOLD is erected. These sides are also fitted with large opening windows and fixed shelves.

Roof. Modern styling in moulded fibreglass with long fins and centre taper section. Chrome lifting handles and spring-loaded fasteners are attached.

Decoration. The whole caravan externally has a permanent polished surface finish in colour-impregnated polyester resin which needs no maintenance or painting and which is impervious to all climatic conditions. The standard colour is cream, but pastel blue and white are available at a small extra charge. Special colours can be arranged and details of cost and delivery will be gladly given on request.

Internally, the base and bunks have the same finish as the outside and need no maintenance. The side walls are lined above shelf level with attractive washable quilting, which gives a pleasant and cosy appearance.

The roof is flock-lined to reduce the risk of condensation, also for insulating purposes and to give a cosy appearance, and needs no form of maintenance. There is a ventilation point at each of the four corners.

Attractive curtains are fitted to the windows and clothes hanging compartments, and all cushions and mattresses are moquette covered.

Equipment. The following standard equipment is supplied with every PORTAFOLD:—

Interior light 6 or 12 volt (with socket and plug for connecting to car battery).
A separate dining table with heat-resisting top, size 24" x 24". Two plastic washbowls.

Floor carpet, four pairs window curtains, two pairs wardrobe curtains. Two foam mattresses, moquette covered size 6' x 2' approx. six foam cushions, moquette covered size 2' x 2' approx. These make up four adult berths. (One extra cushion size 2' x 2' is required to sleep three adults and two children). Seven-pin socket and plug for lighting. Flashing trafficators. Stop and tail lights. Jack handle brace. 50-mm. towball. A cooker is not included but a range of these is available—see list of optional extras.

As fibreglass can be sawn, drilled, tapped, filed, etc., in exactly the same way as wood, the PORTAFOLD lends itself perfectly for the introduction of individual ideas, such as additional shelves, cupboards, hooks, fastenings, curtains, etc.

The PORTAFOLD is British made throughout and is produced to give a lifetime's pleasure and service.

This brochure is issued in an endeavour to cover as many details as is possible to convey and any further information required will be gladly given on request.

GENERAL.

The PORTAFOLD is designed to serve many purposes apart from the obvious and is ideal as a portable office, spare room for visitors at home, demonstration van, etc.

Its design enables it to be towed by any size car from 800-cc. upwards, allowing rear vision while travelling and comfortable accommodation at any time in approximately one minute.

Although the advantages of towing a folding caravan are obvious, the PORTAFOLD can be towed erected, if required, in the same way as a conventional caravan.

As it is so easy to manoeuvre it can be stored in difficult places that would normally be inaccessible to a conventional caravan. Where space is difficult it can be stored on its side, and where space is very difficult the roof can be removed and stored separately. With the wheels also removed its width, when on its side, can be reduced down to approximately 3-ft.

A plastic cover is available for outside winter storage if required.